

What is IB?



IB stands for International Baccalaureate, a program founded in Geneva, Switzerland in 1968. It is a worldwide program which seeks to "develop inquiring, knowledgeable and caring young people who help to create a better and more peaceful world through education that builds intercultural understanding and respect." There are four IB programs - the Primary Years Program (PYP) for ages 3-12, the Middle Years Program (MYP) for ages 11-16, and the Diploma (DP) and Career Related Programs for ages 16-19.

Elements of the Primary Years Program (PYP)

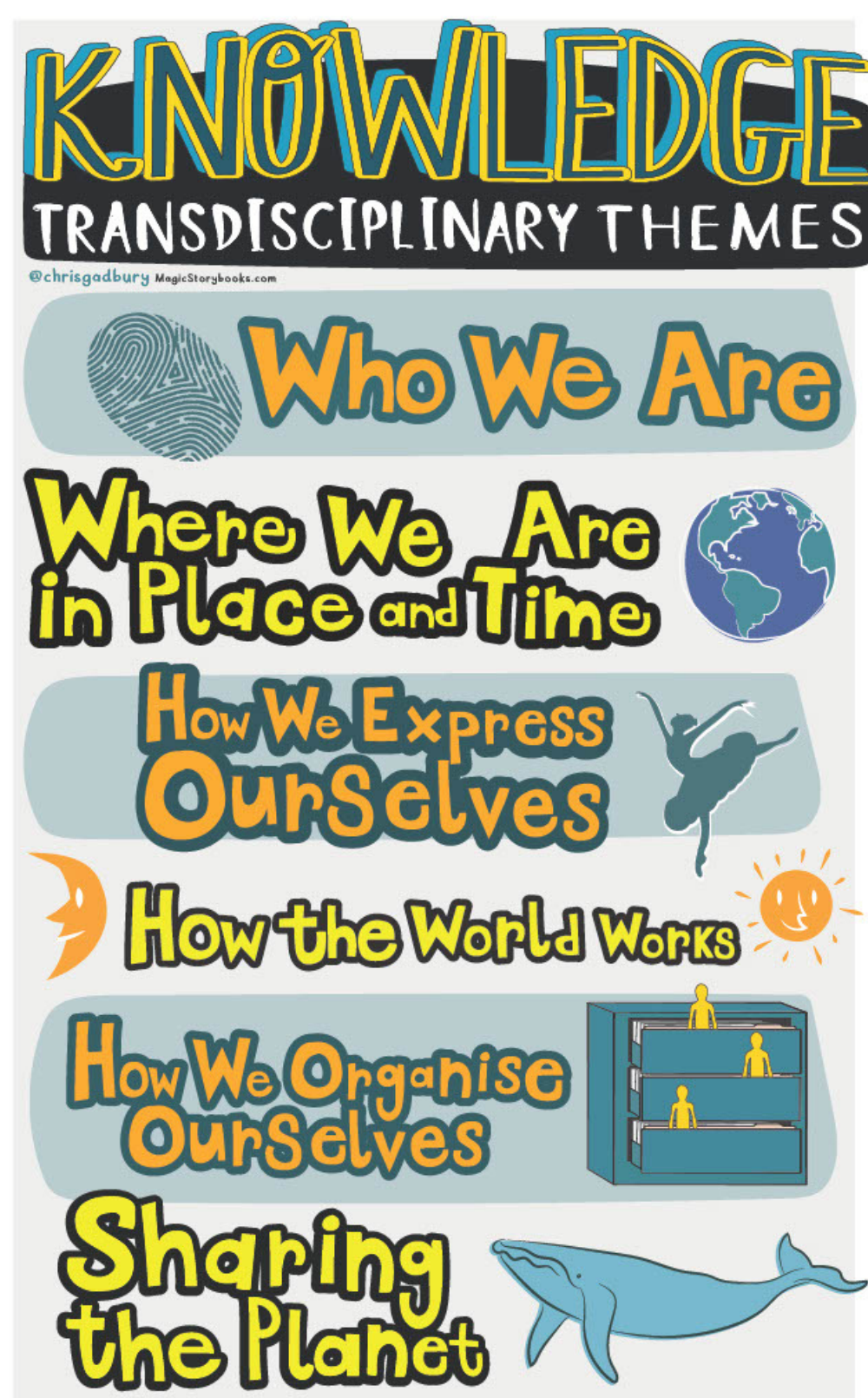
The Learner Profile

The learner profile is the IB mission in action. Students and teachers work on embodying these ten traits.



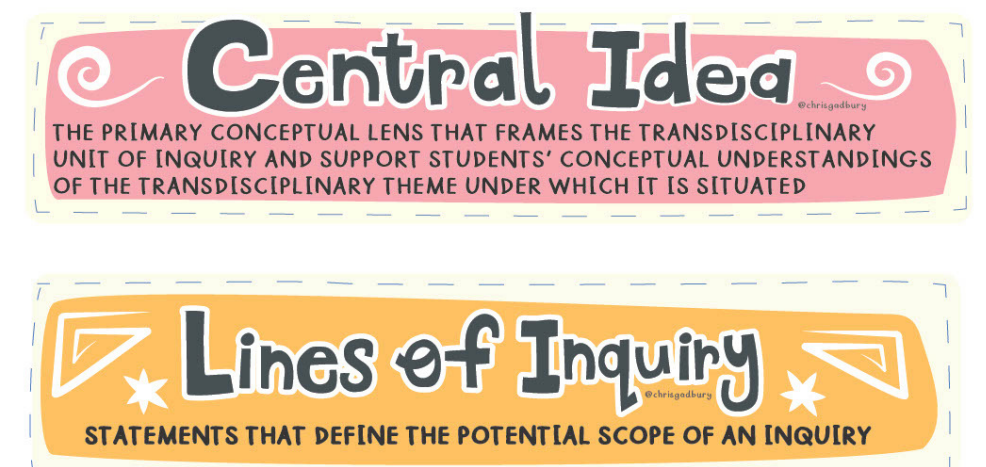
The Six Transdisciplinary Themes

These transdisciplinary themes help teachers to develop inquiries/investigations into important ideas, identified by the school. These units of inquiry are substantial, in-depth and last for several weeks.



Units of Inquiry

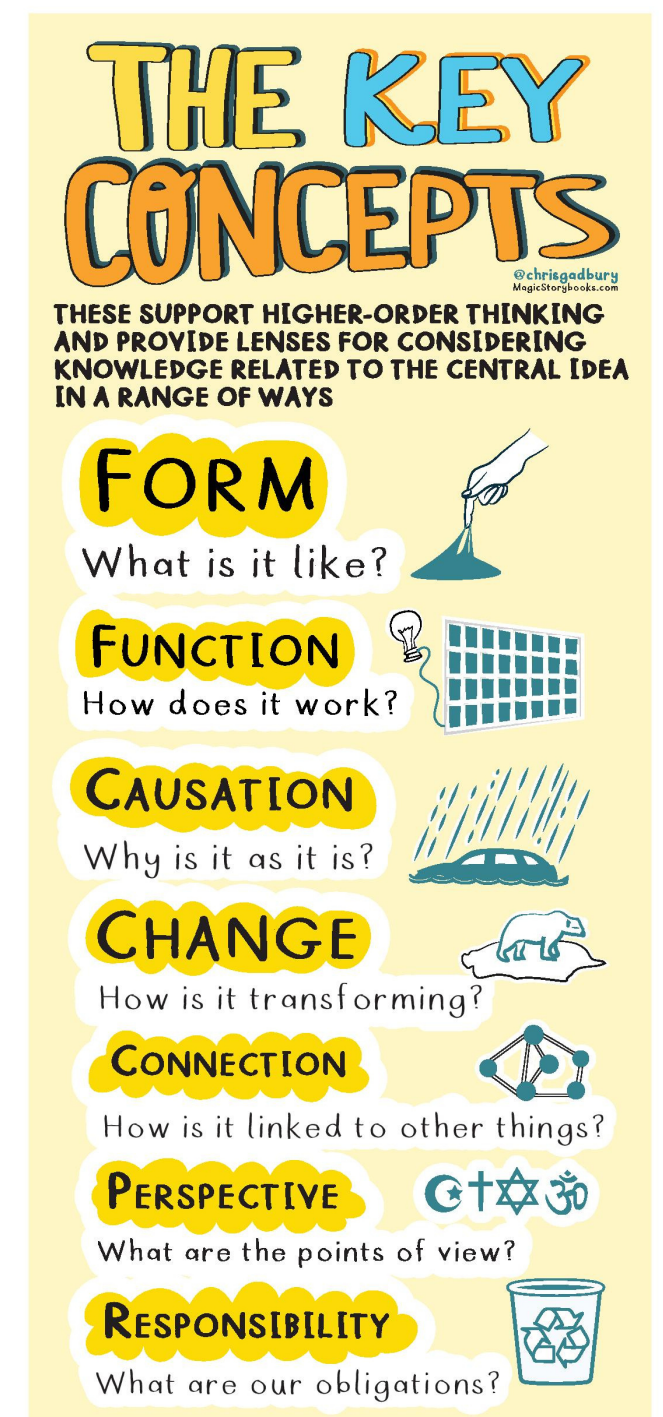
Students explore the six transdisciplinary themes through units of inquiry. Students will inquire into a central idea or a main understanding by being guided by lines of inquiry and teacher questions.



www.MagicStorybooks.com

Key Concepts

Key concepts provide a lens for conceptual understandings within a transdisciplinary unit of inquiry.



Approaches to Learning (ATLs)

Students work on these skills as they inquire.

APPROACHES TO LEARNING



Taking Action

A huge part of IB is learning to take action individually, locally, and/or globally



Questions? Check out the IB Website.

